

*Premium Grade
Digital Recording System*



KE-7000MX Series Embedded DVR

KE-Series Embedded DVR designed in premium H/W platform will lead you to enjoy unbeatable performance and stability at the most affordable price structure. Besides, it offers crystal-like D1 image and real-time network transmission with dual-streaming.

General Features



Unbeatable System Stability

Premium Hardware Design

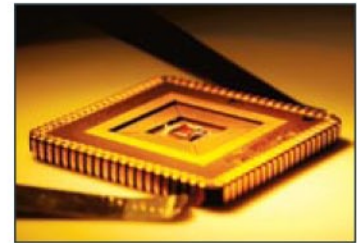
KE-Series enables users to enjoy full quad-plex operations without any delay, especially by 1.5 GHZ CPU adopted in SX series like no other embedded DVRs in the market.

System Health Checking

Specially-designed algorithm is constantly checking system status. If any, warning message and alarm sound shall be shown on the monitor for users to take instant action to prevent any loss of valuable recorded data.

System Watchdog and Reset through IE

System will be auto-rebooted by a watchdog function under abnormal situation. Besides, users can reboot the system through IE without any change of system setting.



High Image Quality

High-Resolution D1 (720 x 480) Recording

KE-Series supports various recording resolutions up to D1 image, to allow users to monitor and playback DVD-like high-definition images at real time speed.

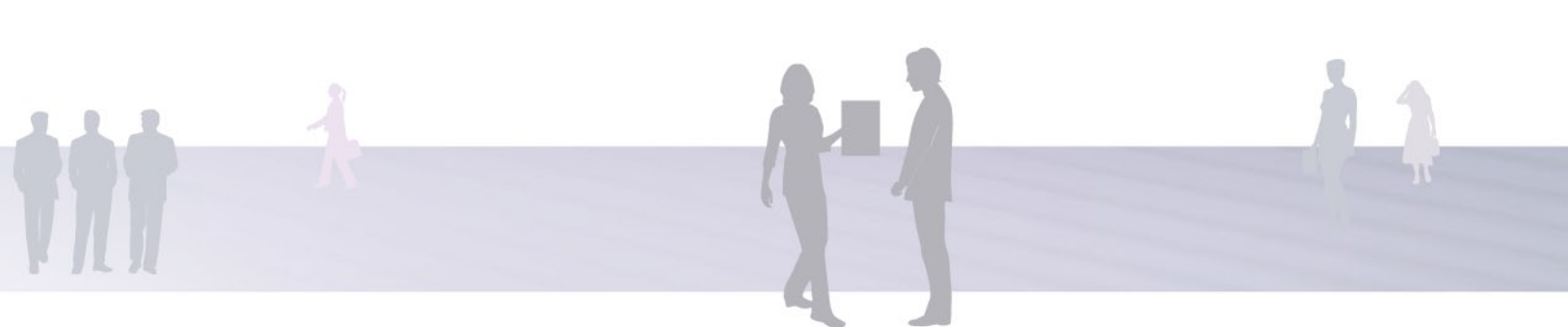
Emergency and Intensive Recording

Apart from regular recording, emergency and intensive recording feature provide users to cope with urgent situation by just one button operation.

Super VGA (SXGA) Display

VGA live resolution can be easily selectable up to SXGA grade (1280 x 1024), to enjoy crystal-like image quality even at mega-size PDP or LCD.





Real-Time Networking

Real-Time Transmission

STL DVR can transmit distortion-free images under all resolution modes at real-time speed as far as network bandwidth is allowed.

Dual-Stream Support

STL DVR generates dual-stream images with adjustable frame & bit rate (one for image recording and the other for network transmission) for users to effectively manage network traffic.

Versatile Web Operation by DDNS

With a built-in web server, versatile web operations such as live monitoring, playback, system configuration are available over the internet, anytime & anywhere.



Colorful and P/C-alike GUI

Colorful and P/C-alike GUI

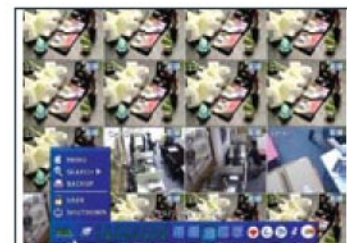
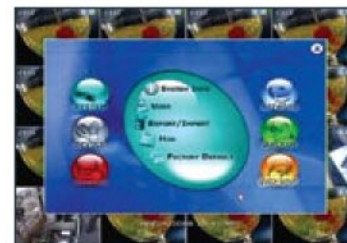
Fully-colored GUI with ordinary USB mouse operation helps users to operate the system by perception. P/C-alike GUI is one of the strong features, too.

Various Backup Devices and Emergency Backup

By using USB ports, users can backup the recorded images to memory stick, DVD-Burner and USB HDDs. Moreover, emergency backup feature provide users to cope with urgent situation by just one button operation.

Diversified System Control

STL DVR is basically controlled by IR remote controller, key buttons on front panel and ordinary USB mouse. Additionally, keyboard controller can be used to control PTZ function and multiple DVRs simultaneously.



KE-7000MX Series

- MPEG4 & H.264 Codec
- 4/8/16 Ch Video & 1 Ch Audio
- 200/240 fps Recording at CIF
- 1.5U Height Case

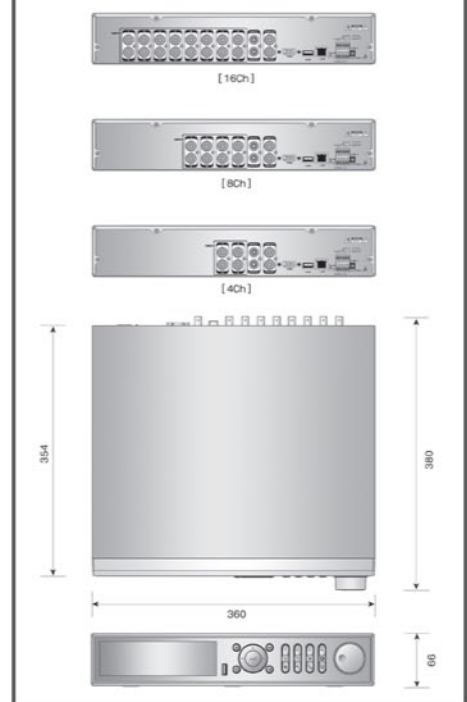


Main Features

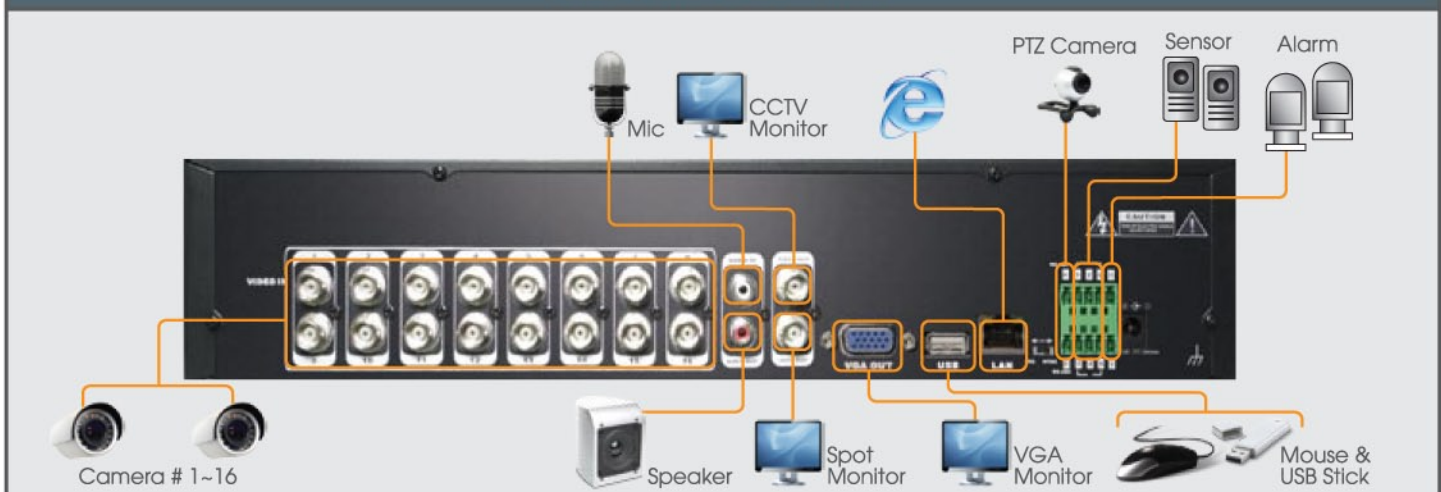
This series offer easy installation, user-friendly operation at a realistic and affordable price to meet the needs of small to medium businesses, uncommon to ordinary entry-level systems.

- O/S : Embedded Linux
- Audio : G723.1
- Internal Bay : 2 x SATA HDDs or 1 x SATA HDD & 1 x DVD-Burner
- No Video Loop-Out
- 2 Main Monitors (Composite & VGA) & 1 Spot Monitor (Composite)
- 4 Alarm Input & 1 Alarm Output
- Power : D/C 12V, 5A
- Dimension (WxHxD) : 360 x 66 x 380 mm
- Certification : CE, FCC, MIC, WEEE & RoHS

Case Dimension



Rear Panel Connection





Main GUI



P/C-aillke GUI



Web Playback

Specification

MODEL		KE-7004MX (4 Ch)	KE-7008MX (8 Ch)	KE-7016MX (16 Ch)
Compression Algorithm		Video : MPEG4 & H.264, Audio : G723.1		
HDD Bay		2 x SATA HDD or 1 x SATA HDD & 1 x SATA DVD		
Operating System		Embedded Linux		
Video	Input	4 Ch	8 Ch	16 Ch
	Loop-Out	Not Available		
Video Mode		NTSC/PAL Selectable		
Display Speed (NTSC/ PAL)		120/100 fps	240/200 fps	480/400 fps
Screen Modes for Live Display		1, 4 & PIP	1, 4, 9 & PIP	1, 4, 9, 16 & PIP
Video-Out	Monitor	2 x Main Monitor (Composite & VGA) & 1 x Spot Monitor (Composite)		
	VGA Resolution	VGA Resolution : 640x480, 800x600, 1024x768 & 1280x1024 (Selectable)		
Recording Speed (NTSC/PAL)	352x240/288(CIF)	120/100 fps	240/200 fps	240/200 fps
	720x240/288(2CIF)	120/100 fps	120/100 fps	120/100 fps
	720x480/576(D1)	60/50 fps	60/50 fps	60/50 fps
Recording Resolution		NTSC : 352x240, 720x240, 720x480, PAL : 352x288, 720x288, 720x576		
Recording Modes		Continuous, Scheduled, Sensor-Activated & Motion Detection Recording Pre & Post Alarm Recording, Emergency Recording, Quick Backup		
Playback & Search	Speed	x1, x2, x4, x8, x16, x32		
	Function	1, 4, 9 & 16 Ch (Multi-Channel Playback) Intelli-Search by Time Bar, Calendar (Date & Time) and Event/system Search		
Audio Input / Output		1 Ch Input / 1 Ch Output		
Alarm Input / Relay Output		4 Ch / 1 Ch		
P/T/Z Control and Port		Virtual Joy-Stick Control on screen by mouse Pan/Tilt/Zoom/Focus/Iris, RS-485 Port		
LAN		10/100 Base-Tx Ethernet (RJ45) - Fixed IP, DHCP & DDNS		
Network Transmission	Function	Video Dual-Stream (Local recording & Network Transmission)		
		Live Monitoring, Remote Playback and File Backup (Triplex-on-Remote) Remote & E-Mail Notification, Remote System Reboot by IE		
Remote PTZ Control		Pan/Tilt/Zoom/Focus/Iris		
Remote Management	Software	RMS (RemoteManager S/W) & CMS (CentralManager S/W)		
	Wb (IE)	Live Monitoring, Playback & System Configuration		
Backup Device	Internal	DVD Burner (Option)		
	External	Local Backup by USB Memory Stick and Network Backup by CMS		
System Recovery after Power Failure		Auto-Reboot and Journaling File System		
Advanced Functions		Multi-Language, System Upgrade by USB & Network Configuration Import & Export, Water-Mark, AVI File Backup Warning Alarm for System Over-Temperature		
System Operation		Front Button, IR Remote Controller, USB Mouse, Keyboard (Option)		
Power		12V x 5A D/C		
Storage Temperature and Humidity		-20~60°C / 20~95% RH		
Operating Temperature and Humidity		5~40 °C / 20~80% RH		
Dimension (WxDxH)		360 x 380 x 66 (mm)		
Certification		CE & FCC & MIC & WEEE, RoHS		

(*) Specification is subject to change without prior notice



One-Stop Digital Security Solution
www.stl-cctv.com

STL Product Line

Category	Model	Description
Embedded DVR	KE-8016SX	480 fps, 16 Ch, 2U Case (3 x HDD & 1 x DVD)
	KE-8000MX	240 fps, 4/8/16 Ch, 2U Case (3 x HDD & 1 x DVD)
	KE-7000MX	240 fps, 4/8/16 Ch, 1.5U Case (1 x HDD & 1 x DVD)
	KE-6000MX	240 fps, 4/8 Ch, Compact Case (1 x HDD)
IP Encoder	IPC-601	1 Ch Video Server
	IPM-601	1 Ch IP Camera Module
Remote Software	CMS	Enterprise-Level Central Management S/W
	RMS	16 Ch Remote Management S/W
	SMS	Master Storage S/W to be used with IP Products
Bundled Camera	Low-Cost CCTV Camera bundled with DVR and IP Encoder	

**Headquarter in Hong Kong
STL Security Ltd.**

13/F., Chung Shun Knitting Centre,
1~3 Wing Yip Street, Kwai Chung, Hong Kong
Tel: 852 2805 1298 Fax: 852 2805 1680
E-Mail: sales@stl-cctv.com

**Korean Office
STL Solution Co., Ltd.**

#606, DaeRyung Techno Town 5-Cha, 493
Geumcheon-Gu, Gasan-Dong Seoul, Korea
Tel: 822 2108 5025 Fax: 822 2108 5029
E-Mail: sales@stl-cctv.com

**China Office
SZ STL Technology Co., Ltd.**

Room 401, Xianke Jiguang Bldg.,
Bagua 4 Road, Futian, Shenzhen, China
Tel: 86 755 2592 0069 Fax: 86 755 2592 0067
E-Mail: sales@stl-cctv.com